



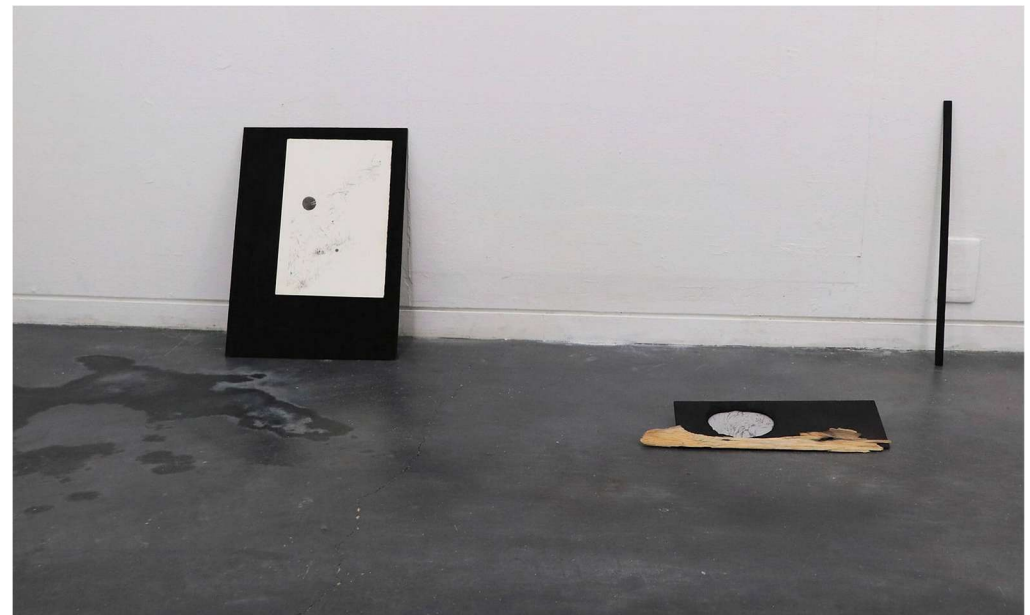
Burn,
graphite drawing on paper with shou-sugi-ban wooden board
and recycled mahogany frame,
100 cm x 70 cm, 2023

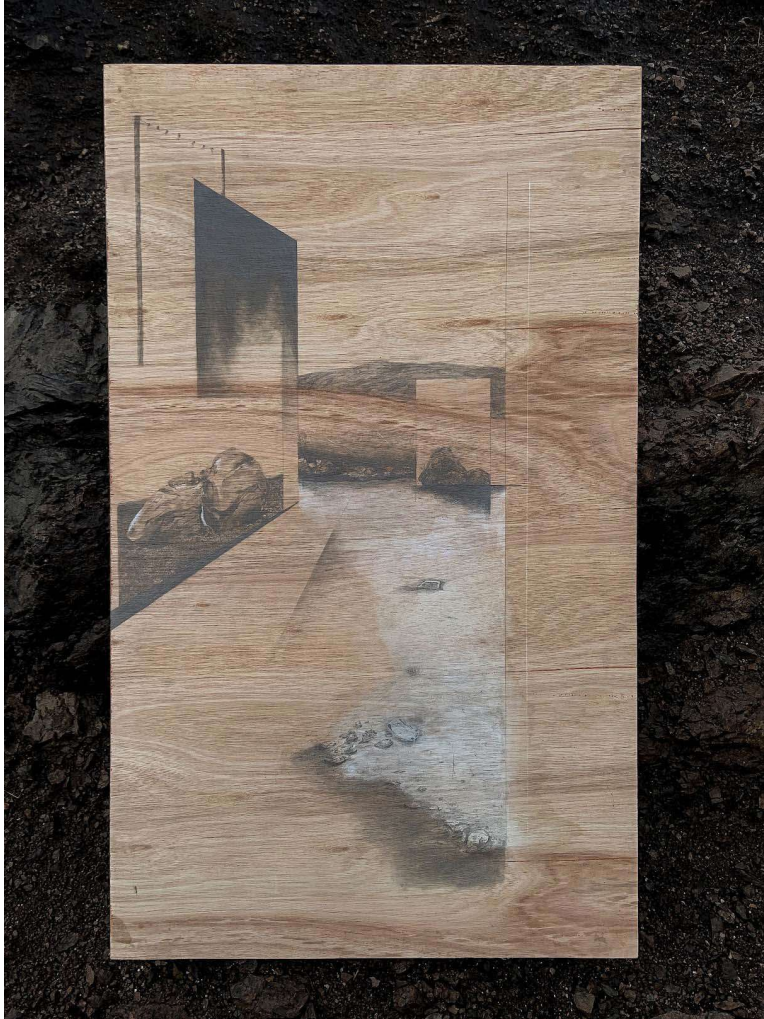
Kirsty Smith's practice is deeply influenced by her surroundings, reflecting an environment that grounds us within it. Her practice articulates materiality, form and craft. There is connectivity between nature and humans around us.

Her practice centres on the ongoing transformation of everyday life and ecology, exploring the impact of human presence on the environment. Creating sculptures, objects, and drawings through a practical engagement with the environment and materials, her work discovers new reflections of coexistence and connection. Utilizing the expanded notion of ecology to discover into ever-evolving human-environment relations. To visualise the environmental shifts from the interconnected reality of new energy with the localised every day. This exploration highlights the interplay between familiar landscapes and the profound influence of modern infrastructure. The work provokes contemplation on the relationship with us and the wider ecosystem.



Silt Burn (correspondences),
collection of graphite drawings on paper and photographs with
shou-sugi-ban wood,
dimensions variable, 2023.





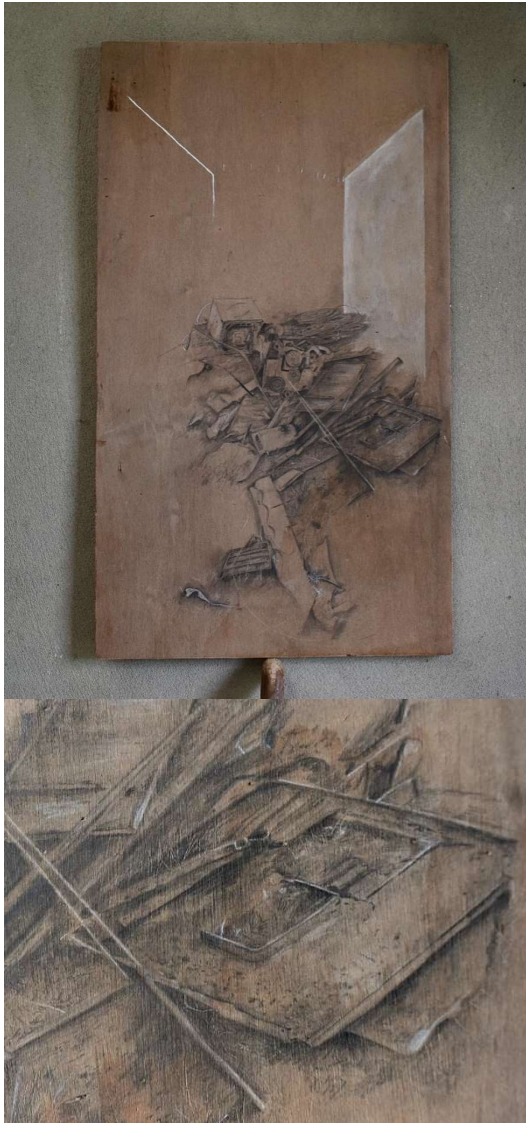
Russaness to Quidi Moor,
Graphite and chalk on wood,
123 cm x 73 cm, 2022.



Out of Black Hill Ground,
concrete cast of crack in peat ground on found object plinth,
40cm x 40cm x 80cm, 2022.



Groundwork,
lead casts of ruins mapped on gridded glass
panel and wooden pallet,
120 cm x 120 cm, 2021.



Fly-Tipped House,
graphite and pencil on recycled wood,
70 cm x 35 cm, 2022.



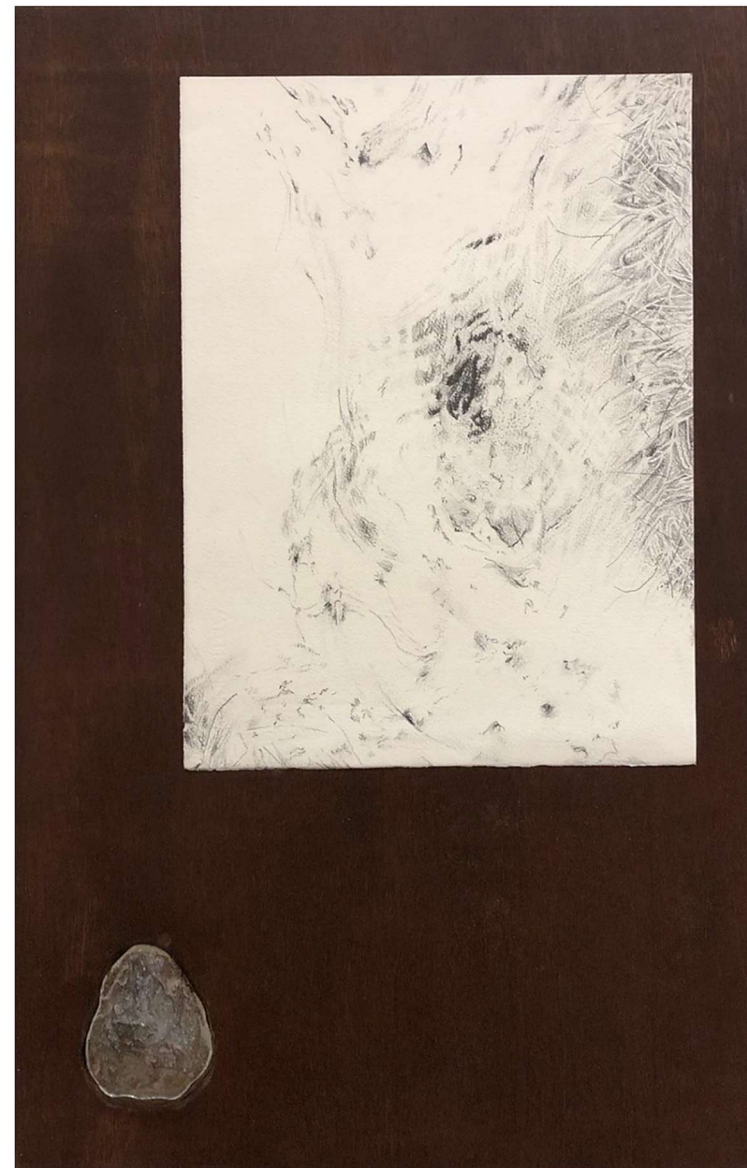
Endless House,
cast concrete on pallet,
50 cm x 50 cm x 50 cm, 2021.



multiplisea,
stills of projected film on local hall building,
dimensions variable, 2019.



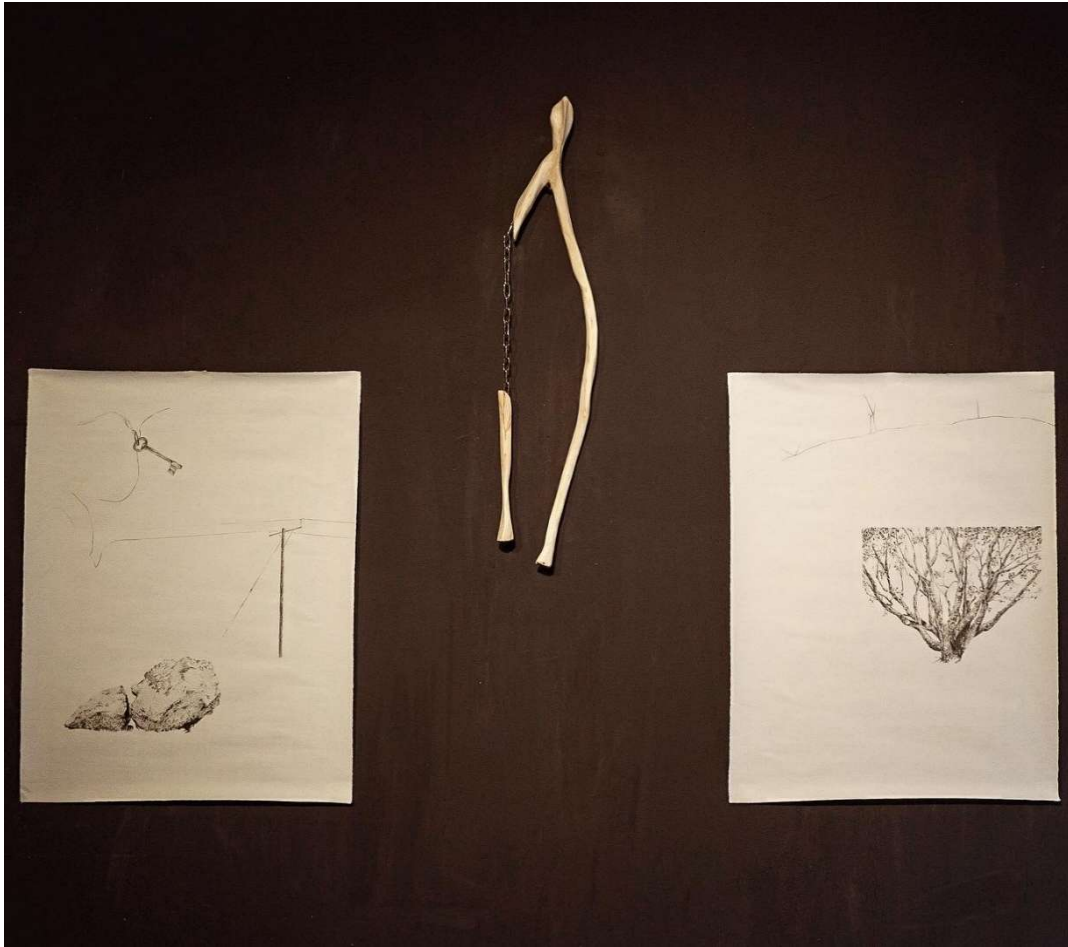
Glit,
quartz pebble, lead molybdomancy, on found mahogany plank,
80 cm x 60 cm x 40 cm, 2023.



Water and rock,
graphite drawing on paper, glass sand cast on found wood,
90 cm x 50 cm, 2023.



Giel,
carved natural quartz with blown-glass marbles, on burnt wood plinth,
38 cm x 27 cm x 37 cm, 2023.



fortunes belong to a fugitive future (correspondences),
graphite drawing on paper, carving of a wishbone from a young tree, attached with a metal chain
dimensions variable, 2023.



Ley Line,
Glass, carved wood, metal pipe fixings, aluminium, plastic,
154 cm x 64 cm, 2024.